

Failure to connect coloured wiring correctly and tape up all connections as described in following instructions may result in an electrical short and void console warranty.

For this installation you will need a **hand-held** Phillips screwdriver, flat thin prying lever, insulation tape, allen-key set and Loctite.

Use Loctite on all console screws when installing.

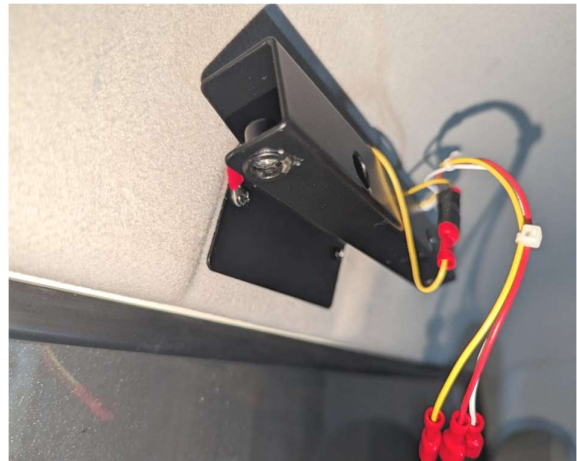
VEHICLE PREPARATION:

- Swing Sun Visors towards windscreen for ease of installation.
- Prise off Light Pod cover panel with thin flat prying tool to expose rear view mirror screws.
- Unscrew mirror from roof.
- **Set mirror and screws aside for re-installation with console.**
- Switch your rear interior light to **off** position; unscrew light assembly and unplug from vehicle connectors.
- Retain light assembly and screws for re-installation back to original upon removal of console.



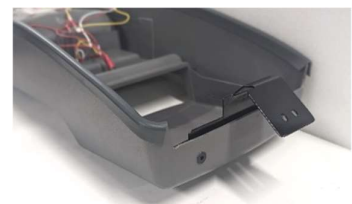
REAR MOUNT BRACKET INSTALLATION:

- Plug console wiring extension to the two (2) individual interior light connector plugs.
- Plug **Red** wire into **Male** connector.
- Plug **White** wire into **female** connector.
- **Tape up these connections.**
- **Yellow** earth wire eyelet is shared with one bracket mount screw.
- Fasten Rear Mount Bracket to interior light screw holes using the two (2) M4 x 16mm Phillips head screws and spring washers.
- Attach yellow earth wire to one of these screws.
- Hang wire over top of bracket next to other wires before tightening screws.
- **Note*(All wiring to hang out over top of bracket).**
- Hand-tighten bracket screws along with a dab of Loctite.



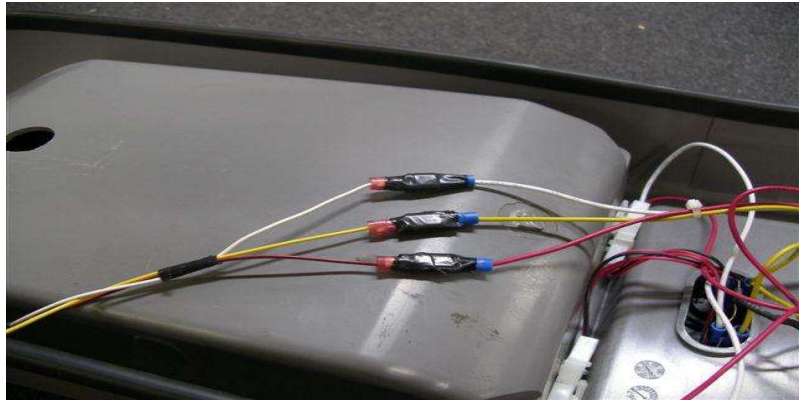
FRONT MOUNT BRACKET INSTALLATION:

- Fasten Front Mount Bracket to **inside** front of Roof Console, using two (2) M6 x 16mm countersunk screws supplied.



CONSOLE INSTALLATION:

- Stand console upright on seat and connect console wiring loom into wiring extension from interior light connectors.
- Connect **red** to **red**, **white** to **white** and **yellow** to **yellow** earth wire.
- Check that console lights work independently once doors are shut and timer switches off.
- **Tape up connections** to ensure wires do not become disconnected.
- There is an '**on/off**' main switch located above radio opening. When '**Off**' it acts as a kill switch--**no lights will work**. When '**On**' lights work independently as map/interior lights when doors are shut and timer switches off; when doors are opened lights will work as door/interior light.
- **TIP:** a helping hand will make console installation much easier.
- Hold console up to roof lining, with the Front Mount bracket placed between light pod opening,
- Use vehicle's original mirror mount screws, **loosely** screw Mirror arm and console front bracket to vehicle mirror mount holes.
- Push console up and rearwards so rear console holes line up over captive nuts in rear mount bracket.
- **TIP*** use thin scribe or screwdriver to line up holes.
- **Loosely** fasten **rear** of console to bracket with M6x30 black Pan head screws.
- Now tighten both front mirror screws and both rear mount screws.
- Keep Light Pod Cover Panel and original Interior Light assembly in safe place for re-fit upon removal of console
- Open Locker Box and remove Microphone Cable Holder.
- Fasten Microphone Cable Holder in place as per radio installation instructions.



Fit Kit: RC70LPCC

- One (1) Front Mount Bracket
- One (1) Rear Mount Bracket
- One (1) Wiring extension
- One (1) Yellow earth wire
- Two (2) M6 x 16mm countersunk head screws
- Two (2) M6 x 30mm black Phillips Pan Head screw set
- Two (2) 4mm x 156mm Phillips head screw set
- Two (2) 4mm Spring Washers
- Three (3) x 100mm Sticky back foam pieces
- One (1) Microphone Cable Holder

RADIO INSTALLATION

Radio Insert Installation for smaller size radios

To install insert, squeeze top & bottom together; push/bend sides and squeeze into tray surround from inside to outside until bottom lip on decorative side of insert snaps/pops out over bottom of tray surround.

Prise with fingers to ensure bottom lip of insert is in place over radio tray surround as described. **Do not** scratch or mark insert or surround by prising/levering with tools; use hands/fingers only.

Radio Installation:

Place protective cover on work bench to avoid scratching console.

Place console on protective cover and, using a sharp knife cut a 30mm x 100mm section out of the radio tray 25mm in from where rear of radio will be when installed. Use a small amount of methylated spirits on a clean cloth to clean exposed part of console and bottom rear of radio.

Peel one side protective backing from foam strip supplied; apply pressure with palm of hand to adhere foam to exposed part of console body (sticky back foam will not adhere to radio tray).

Peel backing off other side of foam strip and add one or more strips of foam to suit different size radios (**see chart below**).

This will keep radio level with bottom of insert/surround. Peel off top foam strip to adhere to radio body.

Mount Roof Console as per vehicle specific instructions. Lay radio aerial cable and power wires out through radio tray/insert opening. Connect radio cables and push radio in on an angle through insert until radio face protrudes approx. 15mm out over bottom of tray surround or insert. Use both thumbs to apply upwards pressure on radio; this will adhere radio body to sticky back foam.

TIP: Smear a light kitchen oil around insert opening to help radio slide in.

Sticky back foam Chart

One (1) strip – standard DIN size radios

Two (2) strips – Icom & Uniden

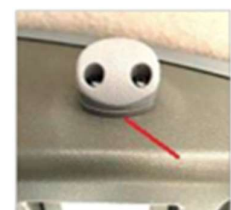
Three (3) strips – GME Electraphone

Microphone handpiece & Microphone Cable Holder Installation

Install in a position that suits best, depending on vehicle and radio model. Ensure microphone or microphone cable and holder does not foul on sun visor when pulled down.

Microphone Spacer

Included in your installation kit is a spacer to be installed under the cable holder for different size microphones. Fix behind cable holder as shown.



Microphone clip on slight angle



Left hand cable outlet radio



Microphone clip on acute angle