



FITTING INSTRUCTIONS

PART NUMBER: SLB21010.

DESCRIPTION: SLB MNT KIT SUIT PRADO 24+

NOTES:

- ◆ This product must be installed exactly as per these instructions.
- ◆ The installation of this product may require the use of specialised tools and/or techniques.
- ◆ It is recommended that this product is only installed by trained personnel.
- ◆ These instructions are correct at the date of publication. ARB Corporation Ltd. cannot be held responsible for the impact of any changes subsequently made by the vehicle manufacturer.
- ◆ During installation, it is the duty of the installer to check correct operation/clearances of all components.
- ◆ Ensure all electrical connections are correct and tight with good earth connection to the engine and/or chassis. Failure to do this may result in component failure or fire.
- ◆ Make sure all wires are securely fastened away from any hot, sharp or moving surfaces. Do not fasten any wires to the brake lines or fuel lines.
- ◆ Make sure that all electrical connections are strong and well insulated.
- ◆ Work safely at all times.

BOM.

Part Number	Description	Quantity
37500613	BRKT SL BATT PRADO 24+	1
6151207	Bolt M6 x 25mm	1
6151021	Bolt M8 x 20mm	1
6151765	Bolt M8 x 65mm	4
4581044	Washer M8 x 1.6 mm	5
4584369	Washer M6 x 1.2 mm	1
4584379	Washer M6 x 2.8 mm	1
6151650	Screw M5 x 20mm	4
4300100	Wiring Kit Batt Slimline Input	1

Fastener Torque Settings.

SIZE	Torque Nm	Torque lbft
M5	6	4.5
M6	9	7
M8	22	16

Table 1.

ARB 4x4 ACCESSORIES

Corporate Head Office

42-44 Garden St
Kilsyth, Victoria
AUSTRALIA, 3137

Tel: +61 (3) 9761 6622
Fax: +61 (3) 9761 6807

Australian enquiries
North & South American enquiries
Other international enquiries

sales@arb.com.au
sales@arbusa.com
exports@arb.com.au

www.arb.com.au



Do not pull on the wiring harness forcefully



Do not connect wiring harness to engine



Ensure all connections are tight and pushed home

FITTING PROCEDURE:

1. Disconnect the vehicle 12V battery negative (-ve) terminal, then the positive (+ve) terminal.
2. Fold down rear seats to gain access to the rear cabin.



For 5-seat Prado variants, follow these Steps, otherwise continue to Step 9.

3. Lift the floor carpet trim to disconnect all clips.
4. Remove the floor carpet trim, put aside for later re-installation.



5. Remove the rear box and the plastic surrounds by lifting upwards.

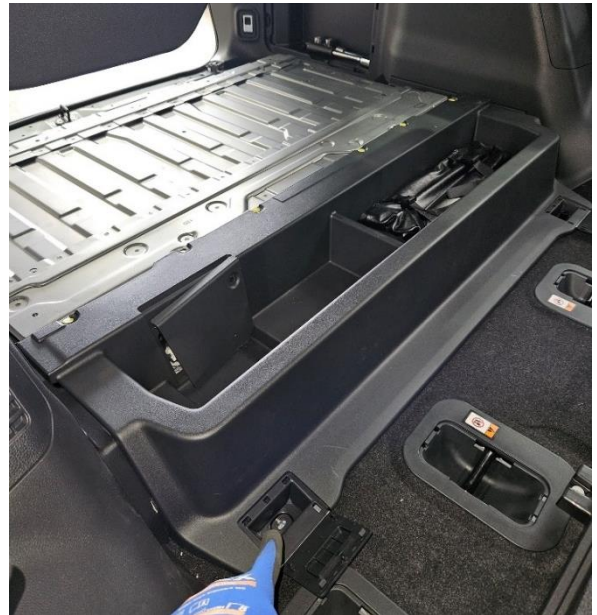


6. Remove the plastic trims around the metal floor by removing the two floor fasteners and pulling upwards.



7. Remove the plastic box from behind the rear seats by unscrewing the two screws and pulling upwards.
8. Remove the fasteners and carefully remove the sheet metal flooring.

Continue to Step 15.

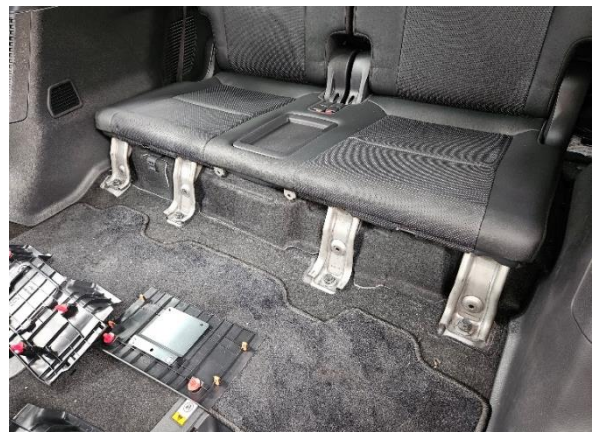


For 7-seat Prado variants, follow these Steps, otherwise continue to Step 15.

9. Between the third row of seats, remove the plastic cover panel by pulling forward.



10. Below the third row of seats, remove the four seats fasteners as shown.



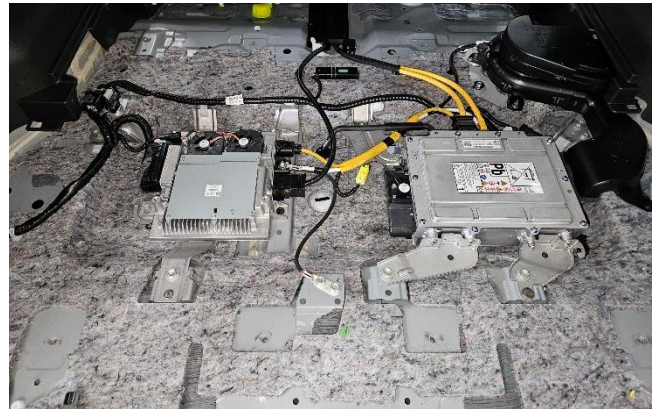
11. Remove the rear box and the plastic surround by lifting upwards.



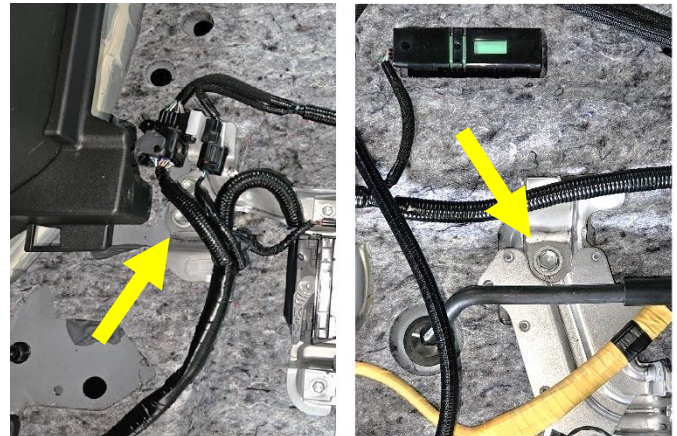
- 12. Behind the third row of seats, remove the four seat fasteners as shown.
- 13. Disconnect the electrical connector as indicated.



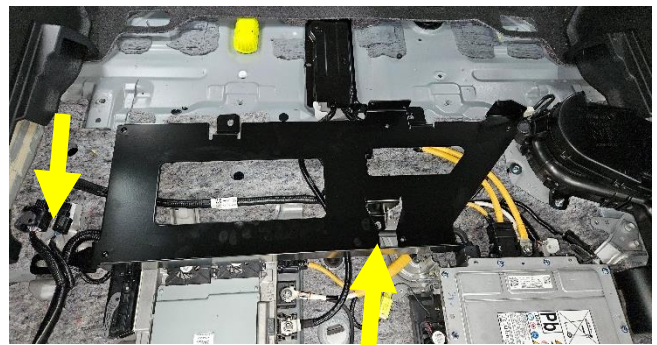
- 14. Carefully lift the seats from the vehicle and put aside for re-installation.



- 15. On the rear cabin floor, temporarily remove the two existing screws as shown.



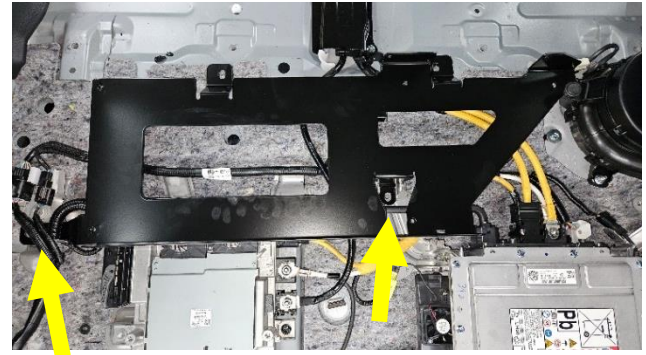
- 16. Position the Mounting Bracket on the floor using the two removed fasteners as locating points.



17. Carefully adjust the mounting bracket and adjacent wires to avoid damage to the wires.



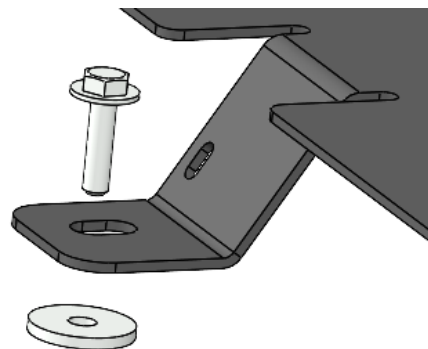
18. Secure the Mounting Bracket to the floor using two existing vehicle screws.



19. Install supplied M8x20mm Bolt with Washer into the Mounting Bracket hole on the top right side.

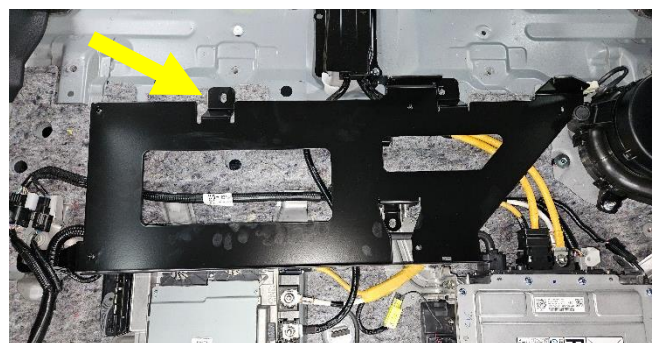


20. On the Mounting Bracket left side, place supplied Washer M6x2.8mm under the top left hole to lift the bracket slightly.



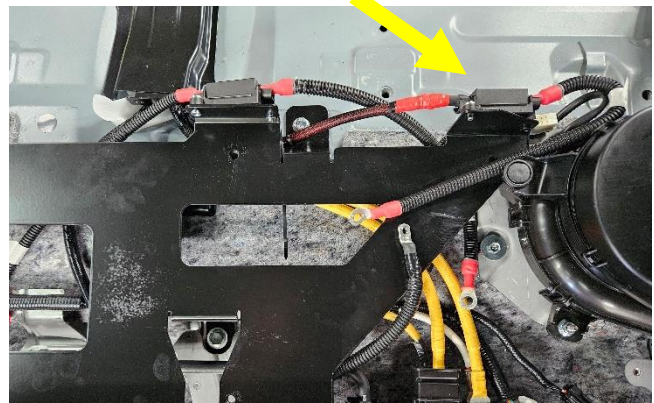
21. Install supplied Bolt M6x25mm with Washer into the Mounting Bracket top left hole.

Torque all Mounting Bracket fasteners as per Table 1.



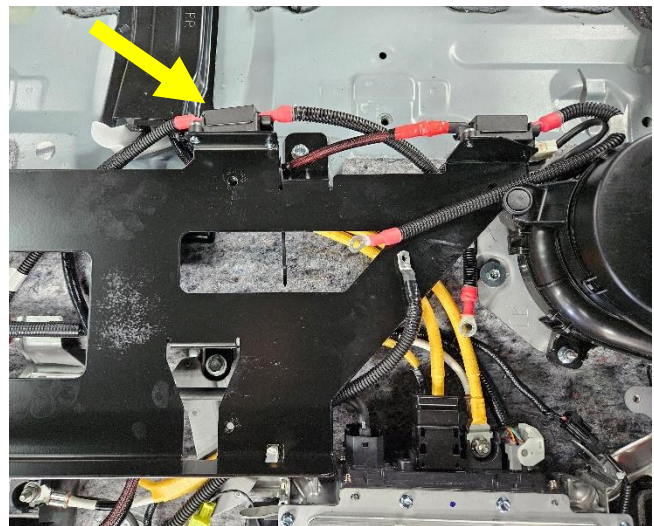
Looms installation

22. Locate fuse holder, 60amp fuse, 300mm cable and 6.0m cable from kit.
23. Install the 60amp fuse into the holder.
24. Install the 300mm cable M5 ring terminal onto the fuse holder.
25. Install the 6.0m cable M5 ring terminal onto opposite end of fuse holder.
26. Route 6.0m cable under the Mounting Bracket.
27. Install fuse holder on **right** side of Mounting Bracket with Screws M5x20mm as shown.



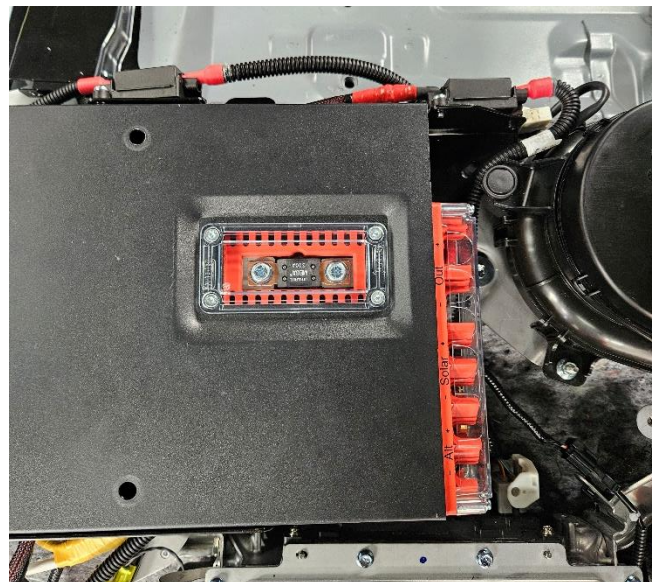
Installation of power output cables (sold seperately).

28. Locate fuse holder, 60amp fuse, 300mm cable, 4.0m twin cable from kit.
29. Install the 60amp fuse into the holder.
30. Install the 300mm cable M5 ring terminal onto the fuse holder.
31. Install the 4.0m cable M5 ring terminal onto opposite end of fuse holder.
32. Mount the fuse holder on the **left** side of the Mounting Bracket using M5x20mm screws as shown.



Slimline Battery installation

33. Ensure the Slimline Battery rocker switch is OFF before the harness installation.
34. Place Slimline Battery onto the Mounting Bracket.
35. On battery terminal block, remove fastener labelled "Alt +" and install the positive 300mm cable ring terminal.
36. Remove fastener labelled "Alt -" and install Ground 1.2m cable onto the terminal block.
37. Remove fastener labelled "Output +" and install the positive 300mm cable ring terminal. (sold seperately).
38. Remove fastener labelled "Output -" and install the 4.0m negative cable ring terminal. (sold seperately).



39. Install the four Bolts M8x65mm and Washers M8 through the battery holes into the Mounting Bracket.

Torque all fasteners as per Table 1.



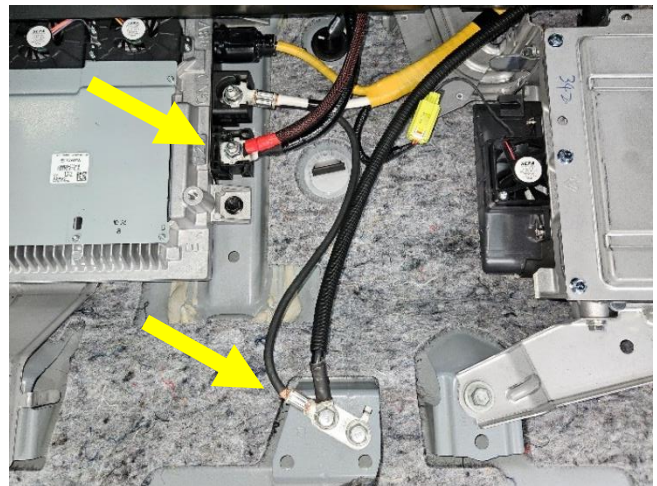
40. ARB recommends installing the ground terminal on the rear floor as shown. Take M8 ring terminals from kit, cut Ground 1.2m cable to required length and crimp the M8 ring terminal onto the cable. Cover with supplied red heat shrink.

41. Remove ground fastener and install Ground ring terminal as shown. Re-install fastener.

42. ARB recommends installing the Slimline Battery alternator positive terminal onto the vehicle inverter 12V terminal as shown. Take M8 ring terminals from kit, cut positive 6.0m cable to required length and crimp the M8 ring terminal onto the cable. Cover with supplied red heat shrink.

43. Remove vehicle inverter 12V fastener and install alternator positive ring terminal as shown. Re-install fastener.

Torque all fasteners as per Table 1.



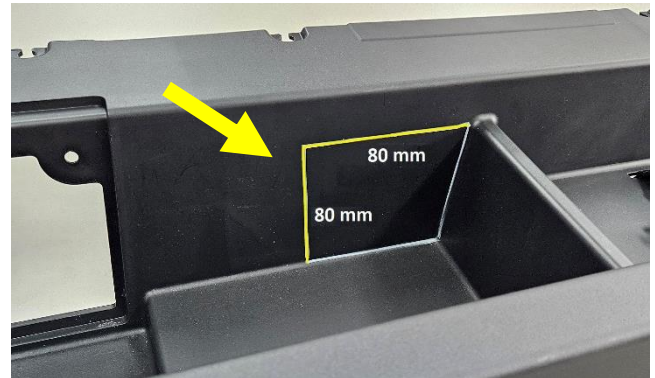
For 5-seat Prado variant, complete these Steps, otherwise continue to Step 49.

44. Reinstall the sheet metal flooring and secure with all fasteners. Installation is reversal of removal procedure.



Trimming the Rear Plastic Box (if Output Cables are Installed)

45. For access to the output fuse holder, mark hole on the plastic box as per size indicated.
46. Cut hole using appropriate tools.
47. Reinstall the rear plastic box and secure with all clips and screws.



48. Reinstall the plastic trim and floor carpet, ensuring all fasteners are properly secured. Installation is reversal of removal procedure.



For 7-seat Prado variant, complete these Steps, otherwise continue to Step 53.

49. Reinstall the third row of seats and secure with all fasteners. Installation is reversal of removal procedure.

50. For access to the output fuse holder, mark hole on the carpet area as indicated.

51. Cut hole using appropriate tools.

52. Replace plastic cover panel.



53. Reconnect the vehicle 12V battery positive (+ve) terminal, then the negative (-ve) terminal.

54. Turn ON Slimline Battery rocket switch.

55. Check App Connectivity. Connect to the Slimline Battery and confirm the battery status is available via the App.

56. Check LED indicator. The Green LED should illuminate Solid to indicate full charge, or flash (1 flash / 10sec) to indicate the idle state.

57. Check Vehicle Charging. Start the vehicle engine, the Green LED should flash (2 flashes / 5 sec) to indicate the battery is charging.

