



FITTING INSTRUCTIONS

PART NUMBER: SLB40010.

DESCRIPTION: SLB MNT KIT SUIT RANGER 22+

NOTES:

- ◆ This product must be installed exactly as per these instructions.
- ◆ The installation of this product may require the use of specialised tools and/or techniques.
- ◆ It is recommended that this product is only installed by trained personnel.
- ◆ These instructions are correct at the date of publication. ARB Corporation Ltd. cannot be held responsible for the impact of any changes subsequently made by the vehicle manufacturer.
- ◆ During installation, it is the duty of the installer to check correct operation/clearances of all components.
- ◆ Ensure all electrical connections are correct and tight with good earth connection to the engine and/or chassis. Failure to do this may result in component failure or fire.
- ◆ Make sure all wires are securely fastened away from any hot, sharp or moving surfaces. Do not fasten any wires to the brake lines or fuel lines.
- ◆ Make sure that all electrical connections are strong and well insulated.
- ◆ Work safely at all times.

BOM.

Part Number	Description	Quantity
3755966	Mounting Bracket Ranger 22+	1
3755962	Jack Relocation Bracket Ranger 22+	1
6152273	Nutsert M8	1
6151579	Bolt M8 x 25mm	3
6151765	Bolt M8 x 65mm	4
4581044	Washer M8	7
4581302	Spacer 4mm	2
6152097	Taptite Bolt M6x25mm (Thread Forming)	1
6151162	Nyloc Nut M6	4
4584369	Washer M6	5
6151650	Screw M5 x 20mm	2
4300100	Wiring Kit Batt Slimline Input	1

Fastener Torque Settings.

SIZE	Torque Nm	Torque lbft
M5	6	4.5
M6	9	7
M8	22	16

Table 1.

ARB 4x4 ACCESSORIES

Corporate Head Office

42-44 Garden St
Kilsyth, Victoria
AUSTRALIA, 3137

Tel: +61 (3) 9761 6622
Fax: +61 (3) 9761 6807

Australian enquiries
North & South American enquiries
Other international enquiries

sales@arb.com.au
sales@arbusa.com
exports@arb.com.au

www.arb.com.au



Do not pull on the wiring harness forcefully



Do not connect wiring harness to engine



Ensure all connections are tight and pushed home

FITTING PROCEDURE:

1. Disconnect the start battery negative (-) terminal, then the positive (+) terminal.
2. Fold down rear seats to gain access to the rear cabin wall.



3. Pull upper plastic trim panel forward to disconnect all clips.
4. Remove all retaining clips securing the fabric trim.
5. Disconnect fabric trim from beneath upper plastic trim. The panel only requires disconnection of the passenger side fabric trim. Fold back to gain access to the rear cabin wall.



6. Remove the antenna box from its current mounting location. Put aside for relocation onto the Mounting Bracket.
7. Remove vehicle Jack from its current stowed location. Put aside with securing bolt for later installation onto the Jack Relocation Bracket.



8. Remove the left hand child seat restraint. This fastening point is used to secure the Mounting Bracket.



9. Temporarily install the Mounting Bracket, ensure the two base holes align with the Jack fastening point and the untapped M6 hole towards the vehicle centre.
10. Mark the top right hole location on the vehicle rear cabin wall.
11. Remove Mounting Bracket and drill out the marked hole on the rear cabin wall.
12. Take the supplied Nutsert M8 and install in the drilled hole.

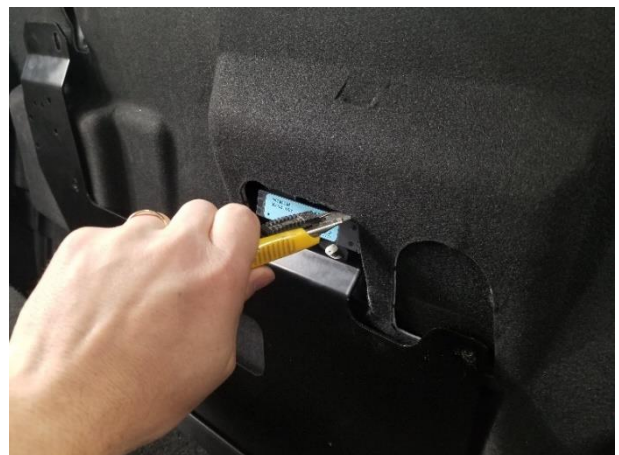
For M8 nutsert, recommended drill size $\varnothing 11.0\text{mm}$.



13. The fabric trim can now be reinstalled. Unfold and reinstall the fabric trim.
14. Install all plastic retaining clips.
15. Secure the upper plastic trim.

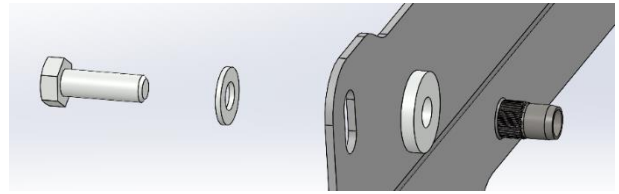


16. Cut fabric trim to gain access to rear cabin fastening points above the antenna.



17. Place Mounting Bracket into position, against the rear cabin wall.
18. Install supplied Bolts M8x25mm and Washers M8 through the two top Mounting Bracket holes, install Spacers 4mm between Mounting Bracket and vehicle rear cabin wall.

IMPORTANT. Metal to metal contact is important to ensure the fasteners will not loosen.



19. Secure the Mounting Bracket onto the floor with supplied Bolt M8x25mm and Washer M8 through the left side floor nut.
20. Install Taptite Bolt M6x25mm through the right side floor nut. This bolt will form a new thread, slowly install without an impact driver.
21. Tighten all four bolts to torque specified in Table 1.



22. Place Slimline battery (sold separately) onto the Mounting Bracket.
23. Install the four Bolts M8x65mm and Washers M8 into the battery mounting holes.
24. Torque to required torque setting as per Table 1.



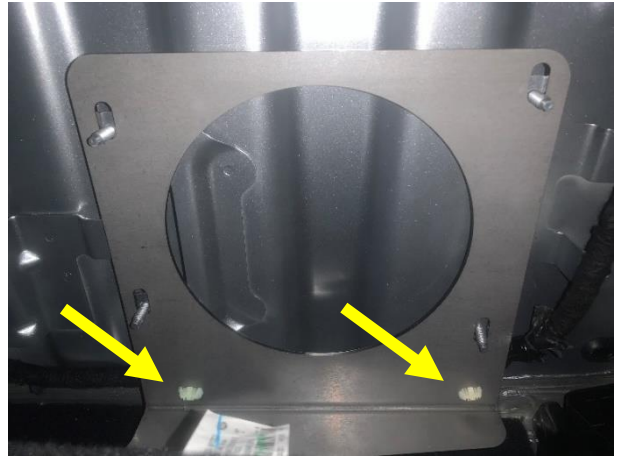
Jack Relocation.

25. The vehicle Jack is relocated behind the rear seat, to the left side of the vehicle. To install, first lift trim to expose the four M6 vehicle studs on the rear cabin wall.
26. Fit Jack Relocation Bracket to four vehicle studs and secure with supplied Nyloc Nuts M6 and Washers M6.
27. Torque to required torque setting as per Table 1.



28. Relocate vehicle wiring loom clipping points to the Jack Relocation Bracket.

29. Refit trim to cover exposed bracket.



30. Place Jack on Jack Relocation Bracket in orientation shown.

31. Install and hand tighten with the securing bolt previously used to secure the Jack.

32. Wind Jack tight to create tension between Jack and Jack Relocation Bracket.



33. Ensure the slimline battery rocker switch is OFF before the harness installation.

34. Locate fuse holder, 60amp fuse, 300mm cable and 6.0m cable from kit.

35. Install the 60amp fuse into the holder.

36. Install the 300mm cable M5 ring terminal onto the fuse holder.

37. Install the 6.0m cable M5 ring terminal onto opposite end of fuse holder.



38. Route 6.0m cable from vehicle start battery, through the firewall grommet and beneath door sill panels.
39. Route cable behind rear cabin fabric trim and along the top of the Jack Relocation Bracket to the slimline battery. Cable tie to the Jack Relocation Bracket.
40. Take M8 ring terminals from kit. Cut positive 6.0m cable to required length and crimp the M8 ring terminal onto the cable. Cover with supplied red heat shrink.
41. On battery terminal block, remove fastener labelled "Alt +" and install the positive ring terminal onto the terminal block.
42. Torque to required torque setting as per Table 1.



43. Locate 1.2m cable with ring terminal from kit.
44. On slimline battery terminal block, remove fastener labelled "Alt -" and install the negative ring terminal onto terminal block.
45. ARB recommend the ground terminal be installed behind the right hand rear corner trim panel. Remove the corner trim panel.
46. Cut negative cable to required length and crimp the M8 ring terminal from kit onto the cable. Cover with supplied black heat shrink.
47. Locate bolt as shown, remove bolt.
48. Install M8 ring terminal and fasten with original bolt.
49. Torque to required torque setting as per Table 1.
50. Install the positive 300mm cable M8 ring terminal onto the vehicle start battery.



Installation of power output cables (sold seperately).

51. Locate fuse holder, 60amp fuse, 300mm cable, 4.0m twin cable from kit.
52. On battery terminal block, remove fastener labelled "Output +" and install the positive 300mm cable ring terminal.
53. On battery terminal block, remove fastener labelled "Output -" and install the 4.0m negative cable ring terminal.
54. Torque all to required torque setting as per Table 1.



55. Install fuse holder on Mounting Bracket with Screws M5x20mm.
56. Install 60amp fuse into fuse holder.
57. Install 300mm positive cable ring terminal onto fuse.
58. Install 4.0m positive cable ring terminal onto opposite end of fuse.
59. For this vehicle, ARB recommend the power output cables exit the vehicle LH rear cabin wall grommet as indicated. Route 4.0m positive cable through grommet to desired location.



Low Voltage alternator connection.

For this vehicle, ARB recommend connecting the Low Voltage terminal to a vehicle ignition source.

60. In the supplied wiring kit, locate the 6.0m blue wire, connect the ring terminal to the Low Voltage terminal as shown.
61. Ford provide an ignition wire in the passenger side footwell with label 'RUN START', route and connect the blue wire to this 'RUN START' wire.



62. Reconnect the start battery positive (+) terminal, then the negative (-) terminal.
63. Turn ON Slimline Battery rocket switch.
64. Check App Connectivity. Connect to the Slimline Battery and confirm the battery status is available via the App.
65. Check LED indicator. The Green LED should illuminate Solid to indicate full charge, or flash (1 flash / 10sec) to indicate the idle state.
66. Check Vehicle Charging. Start the vehicle engine, the Green LED should flash (2 flashes / 5 sec) to indicate the battery is charging.

