



# FITTING INSTRUCTIONS

PART NUMBER: SLB48010.

DESCRIPTION: SLB MNT KIT SUIT BT50 DMAX 20+

## NOTES:

- ◆ This product must be installed exactly as per these instructions.
- ◆ The installation of this product may require the use of specialised tools and/or techniques.
- ◆ It is recommended that this product is only installed by trained personnel.
- ◆ These instructions are correct at the date of publication. ARB Corporation Ltd. cannot be held responsible for the impact of any changes subsequently made by the vehicle manufacturer.
- ◆ During installation, it is the duty of the installer to check correct operation/clearances of all components.
- ◆ Ensure all electrical connections are correct and tight with good earth connection to the engine and/or chassis. Failure to do this may result in component failure or fire.
- ◆ Make sure all wires are securely fastened away from any hot, sharp or moving surfaces. Do not fasten any wires to the brake lines or fuel lines.
- ◆ Make sure that all electrical connections are strong and well insulated.
- ◆ Work safely at all times.

## BOM.

Part Number	Description	Quantity
3755963	Mounting Bracket BT50 DMAX 20+	1
6152273	Nutsert M8	2
6152023	Nut M12	1
6151579	Bolt M8 x 25mm	2
6151765	Bolt M8 x 65mm	4
4581044	Washer M8	6
4581011	Washer M12	2
4581302	Spacer 4mm M8	2
6151650	Screw M5 x 20mm	2
4300100	Wire Kit Slimline Batt Input	1

## Fastener Torque Settings.

SIZE	Torque Nm	Torque lbft
M5	6	4.5
M6	9	7
M8	22	16
M12	44	32

Table 1.

## ARB 4x4 ACCESSORIES

Corporate Head Office

42-44 Garden St  
Kilsyth, Victoria  
AUSTRALIA, 3137

Tel: +61 (3) 9761 6622  
Fax: +61 (3) 9761 6807

Australian enquiries  
North & South American enquiries  
Other international enquiries

sales@arb.com.au  
sales@arbusa.com  
exports@arb.com.au

[www.arb.com.au](http://www.arb.com.au)



Do not pull on the wiring harness forcefully



Do not connect wiring harness to engine



Ensure all connections are tight and pushed home

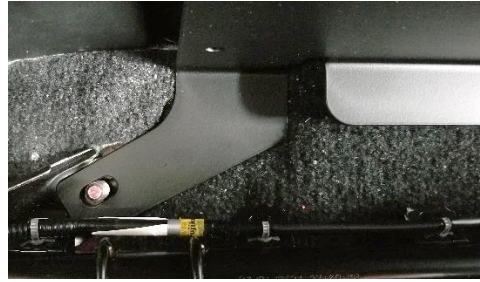
## FITTING PROCEDURE:

1. Disconnect the start battery negative (-) terminal, then the positive (+) terminal.
2. Fold down rear seats to gain access to the rear cabin wall.



3. Remove the two seat retaining nuts from the vehicle rear cabin floor.
4. Install the Washers M12 onto the seat retaining studs, and then temporarily install the Mounting Bracket onto the Washers.

Note, the Washers M12 is necessary to lift the Mounting Bracket level with the floor carpet.



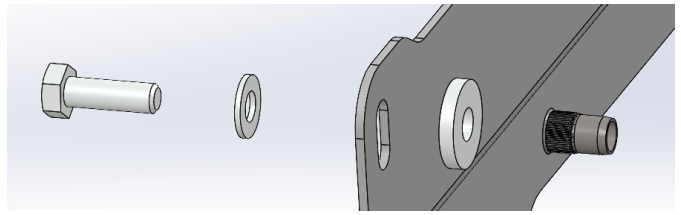
5. Two new nutserts require installation on the rear cabin wall. Mark the hole locations on the rear cabin fabric.
6. Remove Mounting Bracket and cut two 30mm holes in the fabric to allow the Spacers 4mm M8 to be installed between the cabin wall and Mounting Bracket.
7. Temporarily install the Mounting Bracket again and mark holes for the two Nutserts M8.
8. Remove Mounting Bracket and drill  $\varnothing 11\text{mm}$  holes at the marked locations for the two Nutserts M8.
9. Take the supplied Nutserts M8 and install in the drilled cabin holes.

For M8 nutsert, recommended drill size  $\varnothing 11.0\text{mm}$ .



10. Install Mounting Bracket onto the seat fastening studs atop the previously installed washers.
11. Install supplied Bolts M8x25mm and Washers M8 through Mounting Bracket holes. Install Spacer 4mm between Mounting Bracket and Nutsert M8.
12. Install the original vehicle M12 nuts onto the seat fastening studs. Screw down M12 nuts by hand only.
13. Torque all bolts to required torque setting as per Table 1.

**IMPORTANT.** On the rear cabin, metal to metal contact is important to ensure the fasteners will not loosen.



14. Temporary place Slimline battery (sold separately) on Mounting Bracket.
15. Mark the outline of the Slimline battery corner on the vehicle plastic trim as shown.



16. Remove battery and cut plastic trim along marked line.

There is a plastic clip above the cut line, ensure this plastic clipping point is not cut or damaged during this Step.



17. To install slimline battery (sold separately), first insert the two lower Bolts M8x65mm and Washers M8. These cannot be installed once the battery is in place.
18. Place battery onto Mounting Bracket.
19. Install the remaining two Bolts M8x65mm and Washers M8 into the upper battery mounting holes.
20. Tighten retaining bolts and torque to the required torque setting as per Table 1.



21. Ensure the slimline battery rocker switch is OFF before the harness installation.
22. Locate fuse holder, 60amp fuse, 300mm cable and 6.0m cable from kit.
23. Install the 60amp fuse into the holder.
24. Install the 300mm cable M5 ring terminal onto the fuse holder.
25. Install the 6.0m cable M5 ring terminal onto opposite end of fuse holder.



26. At the vehicle start battery, route 6.0m red cable through the firewall grommet, beneath door sill panels to the slimline battery avoiding sharp and hot objects.  
*The 6.0m blue cable can be routed at the same time, refer Step 46.*
27. Take M8 ring terminals from kit. Cut positive 6.0m cable to required length and crimp the M8 ring terminal onto the cable. Cover with supplied red heat shrink.
28. On battery terminal block, remove fastener labelled "Alt +" and install the positive ring terminal onto the terminal block.
29. Torque to required torque setting as per Table 1.

30. Locate 1.2m black cable with ring terminal from kit.
31. On slimline battery terminal block, remove fastener labelled "Alt -" and install the negative ring terminal onto terminal block.
32. ARB recommend the ground terminal to be installed on the seat mounting bolt adjacent the vehicle jack.
33. Cut negative cable to required length and crimp the M12 ring terminal from kit onto the cable. Cover with supplied black heat shrink.
34. Install M12 ring terminal with cable atop seat mounting bolt, fasten with supplied Nut M12. Tighten firmly.
35. Torque to required torque setting as per Table 1.
36. Install the positive 300mm cable M8 ring terminal on the vehicle start battery.



Installation of power output cables (sold seperately).

37. Locate fuse holder, 60amp fuse, 300mm cable, 4.0m twin cable from kit.
38. On battery terminal block, remove fastener labelled "Output +" and install the positive 300mm cable ring terminal.
39. On battery terminal block, remove fastener labelled "Output -" and install the 4.0m negative cable ring terminal.
40. Torque all to required torque setting as per Table 1.



41. Install fuse holder on Mounting Bracket with Screws M5x20mm.
42. Install 60amp fuse into fuse holder.
43. Install 300mm positive cable ring terminal onto fuse.
44. Install 4.0m positive cable ring terminal onto opposite end of fuse.
45. For this vehicle, ARB recommend the power output cables exit the vehicle through the supplied grommet which can be installed on the cabin rear wall or vehicle floor. Route 4.0m positive cable through grommet to desired location.



Low Voltage alternator connection.

For this vehicle, ARB recommend connecting the Low Voltage terminal to a vehicle ignition source.

46. In the supplied wiring kit, locate the 6.0m blue wire, connect the ring terminal to the Low Voltage terminal as shown.
47. Route the blue wire to a suitable vehicle ignition source and connect accordingly. A suitable ignition source maybe a DC socket or fuse tap into the fuse box.



48. Reconnect the start battery positive (+) terminal, then the negative (-) terminal.
49. Turn ON Slimline Battery rocket switch.
50. Check Battery App Connectivity. Connect to the Slimline Battery and confirm the battery status is available via the App.
51. Check LED indicator. The Green LED should illuminate Solid to indicate full charge, or flash (1 flash / 10sec) to indicate the idle state.
52. Check Vehicle Charging. Start the vehicle engine, the Green LED should flash (2 flashes / 5 sec) to indicate the battery is charging.

